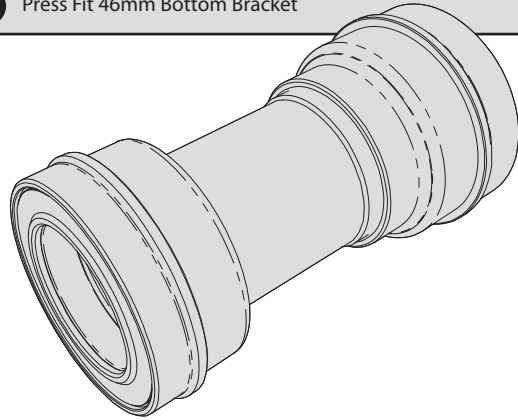




Press Fit 46mm Bottom Bracket

For 30mm crank spindles

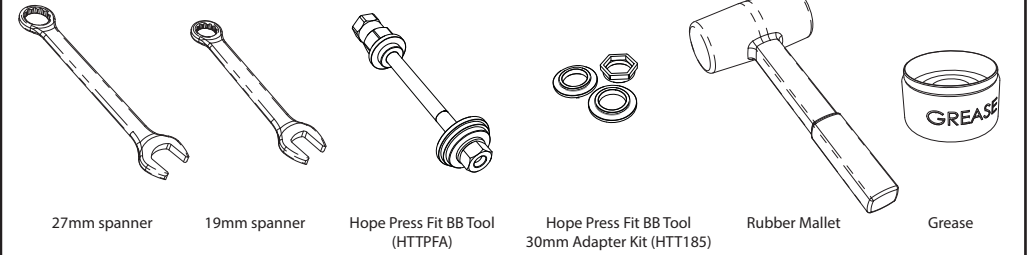


BBPF467330SSN
BBPF468330SSN

HOPETECHNOLOGY
Hope Mill,
Barnoldswick,
Lancashire,
ENGLAND
BB18 5PX

www.hopetech.com

Tools required:



27mm spanner

19mm spanner

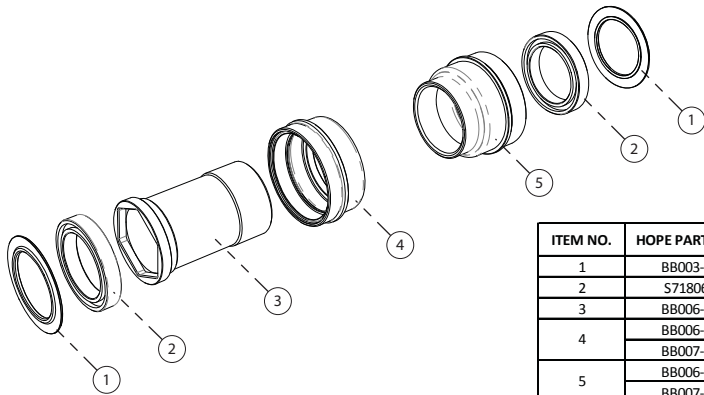
Hope Press Fit BB Tool (HTT185)

Hope Press Fit BB Tool 30mm Adapter Kit (HTT185)

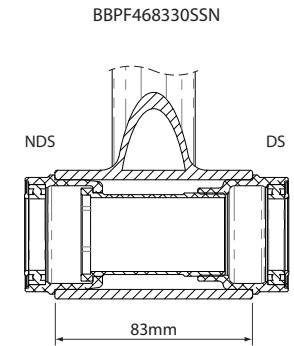
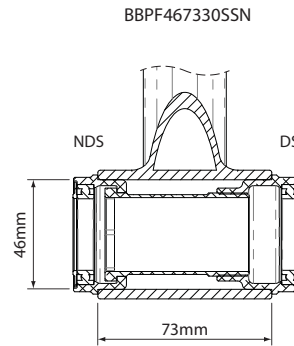
Rubber Mallet

Grease

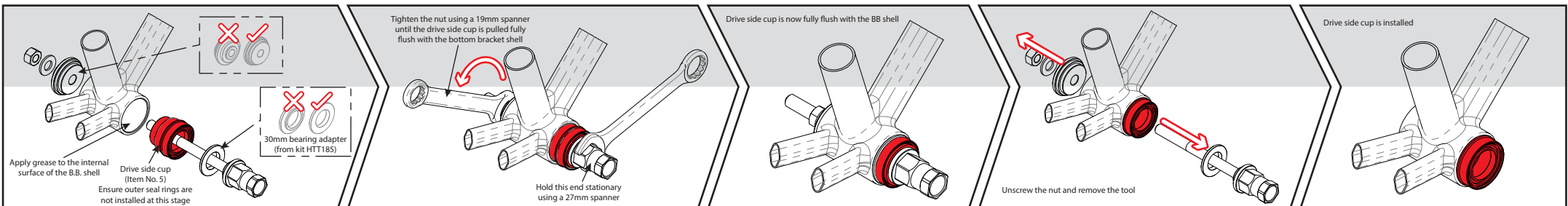
We strongly advise that this bottom bracket is installed and maintained by a competent cycle mechanic, using Hope Press Fit BB Tool (HTT185) with the 30mm Adapter Kit (HTT185). This bottom bracket is intended for installation in bottom bracket shells with an internal diameter of 46mm and widths of 73mm or 83mm. Check internal edges of bottom bracket shell and remove any burrs or paint build-up prior to fitting. Ensure that the bearings (S71806) are fitted the correct way with the green seal facing outside.



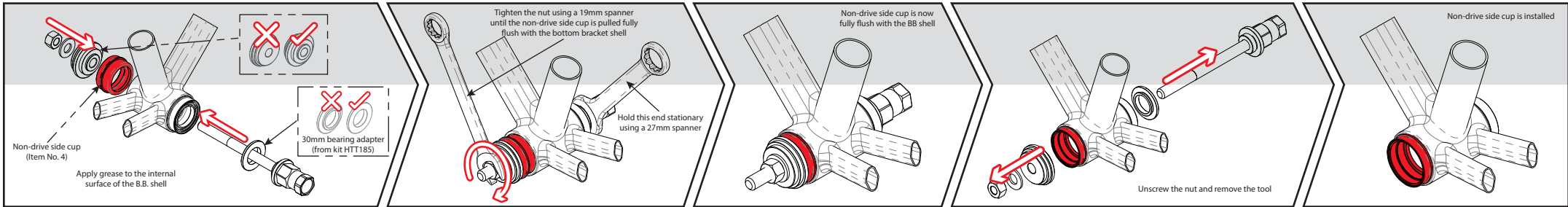
ITEM NO.	HOPE PART NO.	DESCRIPTION
1	BB003-4	30mm Alloy Seal Ring
2	S71806	30mm BB Stainless Steel Bearing
3	BB006-3	30mm Bolt-in Centre Tube
4	BB006-1	PF46 73 30 Non-Drive Side Cup
	BB007-1	PF46 83 30 Non-Drive Side Cup
5	BB006-2	PF46 73 30 Drive Side Cup
	BB007-2	PF46 83 30 Drive Side Cup



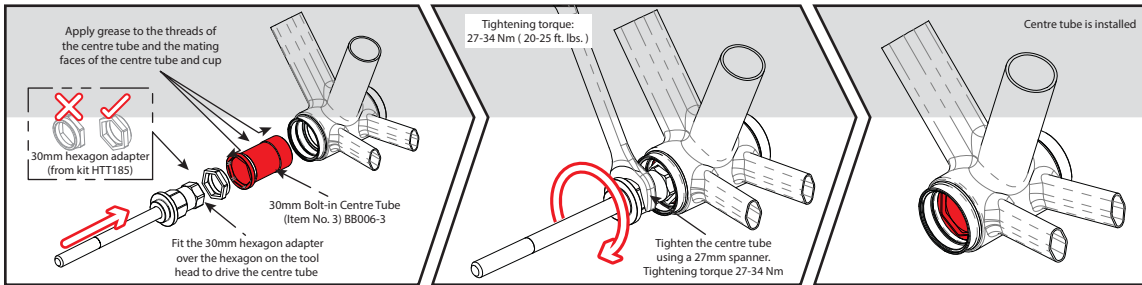
1. Install the drive side cup (with bearing fitted).



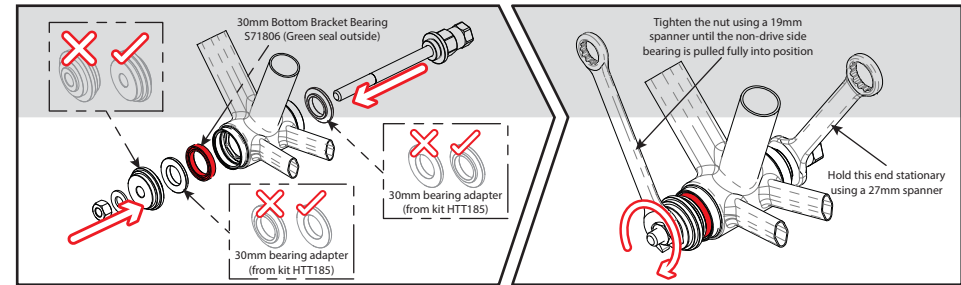
2. Install the non-drive side cup (without bearing fitted).



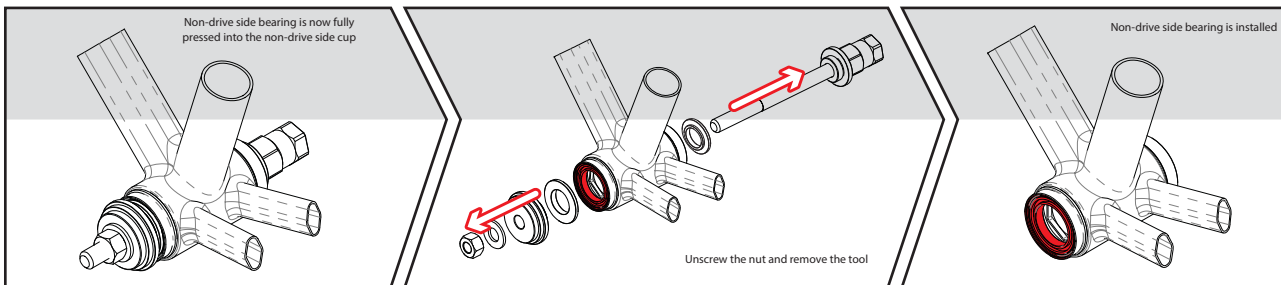
3. Install the centre tube.



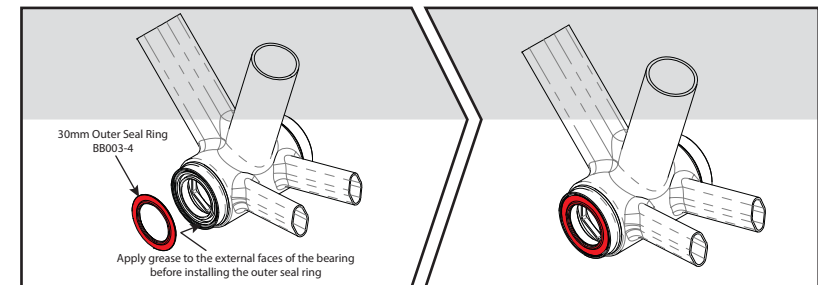
4. Install the non-drive side bearing. Ensure the bearing is fitted with the green seal outside.



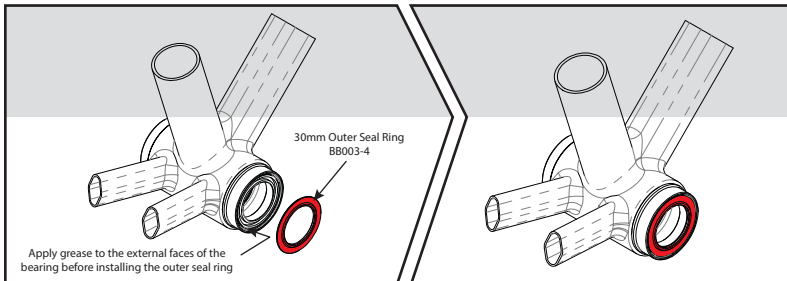
4. Install the non-drive side bearing (continued).



5. Install non-drive side outer seal ring.



6. Install drive side outer seal ring.



Your bottom bracket is now fully installed and ready for the continued installation of your crank set.