

INTRODUCTION

Congratulations, you have just acquired the HOPE TECHNOLOGY 1x chainguide proudly designed, made and tested in our Barnoldswick factory in the United Kingdom.

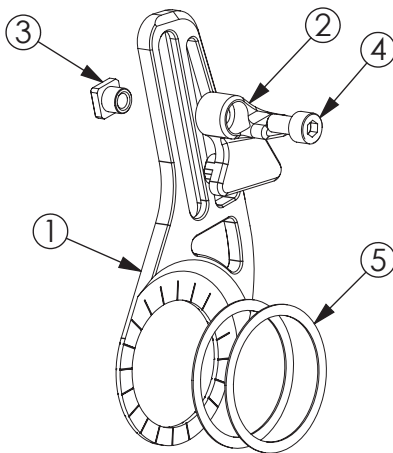
Please note that this chainguide has been designed and is optimised to be used in association with our Integrated Bash Ring (IBR) chainrings. In most cases it can also be used on a normal chainring plus bash ring setup. For the chain, the bash ring acts as an outer guide and the chainguide as inner guide, they have to work together.

BOX CONTENTS & TOOLS REQUIRED

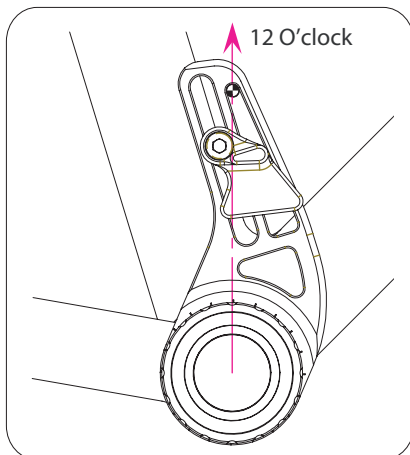
- 1- BB mounted guide plate
- 2- Chain finger guide
- 3- Special T nut
- 4- M5 x 10mm cap screw
- 5- 2x 0.5mm BB shim

Tool required :

- 4mm Allen key
- Chainring and Bottom Bracket removal tools

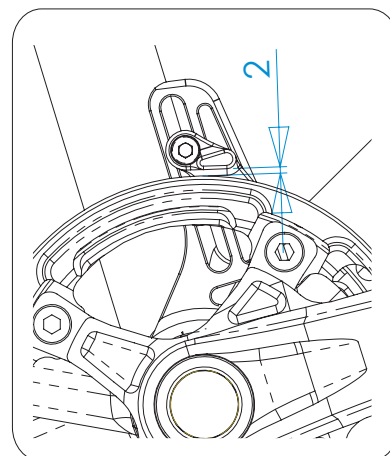


INSTALLATION



1. Remove first the front mech if present.
2. Remove cranks and bottom bracket drive side cup.
3. Clean BB cup, BB shell and BB cup contact face on frame.
4. Apply grease on BB shell thread and a thin layer of grease on BB cup face that will be in contact with the chainguide plate.
5. Mount the chainguide plate and two 0.5mm shims between the BB cup and the BB shell. The plate and the two shims are replacing the 2.5mm spacer originally in contact with BB cup. On a 68mm BB shell, the 2.5mm spacer in contact with BB shell must remain in place. Place the 0.5mm shims on one side or the other of the chainguide plate to adjust the chainline.
6. Align the top corner radius of the chainguide right hand pocket vertically above center of BB (see 12 O'clock arrow).
7. Hold the chainguide plate in position if necessary and tighten the BB cup to manufacturer recommended torque.

8. Make sure the cranks is fitted either with Hope Technology IBR chainring in the middle chainring position or best position for optimum chainline. Alternatively you can in most case use a chainring and a bash ring.
9. Re-install your cranks following manufacturer recommendations.
10. Slide the finger guide down until it is at about 2mm above the bash guard and tighten the M5 cap screw. Tightening torque 5 N.m
11. Go for a test ride.



WARRANTY

All Hope Technology components are covered for one year from original date of purchase against manufacturer defects in material and workmanship. Proof of purchase is required. Products must be returned to the original place of purchase or to Hope Technology to process any warranty claim. Please print and fill the "goods returned form" found on the tech support section of our website should you wish to send a product back. This warranty does not cover any damage caused through mis-use or failing to comply by the recommendations given in this manual. This warranty does not affect your statutory rights.