

INTRODUCTION

Congratulations, you have just acquired the HOPE TECHNOLOGY 1x chainguide proudly designed, made and tested in our Barnoldswick factory in the United Kingdom.

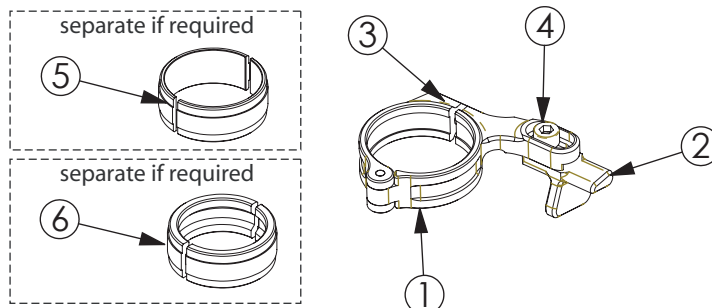
Please note that this chainguide has been designed and is optimised to be used in association with our Integrated Bash Ring (IBR) chainrings. In most cases it can also be used on a normal chainring plus bash ring setup. For the chain, the bash ring acts as an outer guide and the chainguide as inner guide, they have to work together.

BOX CONTENTS & TOOLS REQUIRED

- 1- Seat tube clamp (low mount version show)
- 2- Chain finger guide
- 3- M4 x 14mm cap screw
- 4- M5 x 10mm cap screw
- 5- dia31.8mm adaptor sleeve (sold separately if required)
- 6- dia28.6mm adaptor sleeve (sold separately if required)

Tool required :

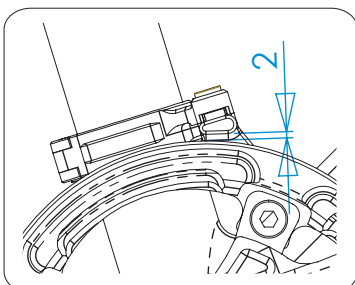
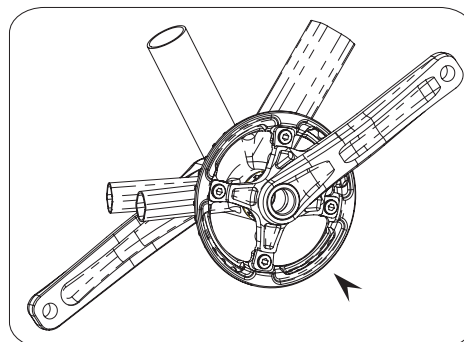
- 3mm Allen key
- 4mm Allen key
- Chainring removal tools



INSTALLATION

1. Remove first the front mech if present. Remove all chainrings from the cranks.

2. Install the Hope Technology IBR chainring in the middle chainring position or best position for optimum chainline. Alternatively you can in most case use a chainring plus bash ring setup.



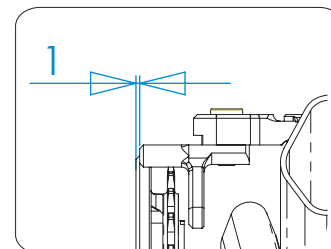
3. Make sure the seat tube is clean and free of any dirt or mud. Install the clamp around the seat tube and slightly tighten the M4 cap screw but still allow the clamp to slide up and down.

4. Slide the clamp down until the top of the finger guide is at about 2mm above the bash guard part of the chainring and tighten the M4 cap screw. Tightening torque 3 N.m

5. Last, laterally adjust the finger guide according to the chainline. As a starting point we recommend installing the front face of the finger guide at about 1mm behind the front of the IBR chainring.

6. Spin the pedals and try all the different gears and re adjust the lateral position of the finger guide if you notice and chain rub. When you are happy with its position, tighten the M5 cap screw. Tightening torque 5-6 N.m

7. Go for a test ride.



WARRANTY

All Hope Technology components are covered for one year from original date of purchase against manufacturer defects in material and workmanship. Proof of purchase is required. Products must be returned to the original place of purchase or to Hope Technology to process any warranty claim. Please print and fill the "goods returned form" found on the tech support section of our website should you wish to send a product back. This warranty does not cover any damage caused through mis-use or failing to comply by the recommendations given in this manual. This warranty does not affect your statutory rights.